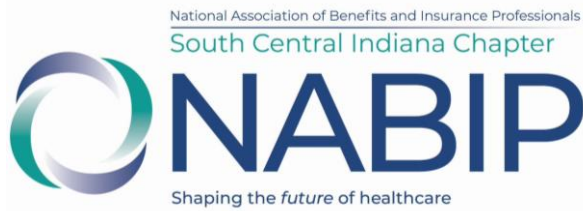


Platinum Certified 2024 / Pacesetter Award Winner 2023-24



May 2025 Issue 24 Volume 262

Mission Statement: *To prepare our members to best serve their communities and represent our industry through education, shared experiences, and motivation*

Next Meeting: 9:00 AM



MID-AMERICA
science park

Thursday, May 8th
821 S Lake Road South
Scottsburg, Indiana
Room 126

2 Hours of Indiana Approved C.E.

9:00 AM to 9:30 AM - Business Meeting & Legislative Updates

9:30 AM – 11:30 AM “VA Healthcare & Medicare” (2 Hrs. Credit, Course # 42726) presented by **Michael Jones, U.S. Army Veteran, with Humana**



No charge for NABIP members; \$5 for non-members to cover Sircon cost payable at the door. Email your name and Indiana License # to Andrea at ABogardInsurance@yahoo.com to register by noon on Monday, May 6th.

South Central *REVIEW* May 2025

**OUR
PREZ
SAYS ...**



Hello Golfers!

Hope to see you at the tee box in two weeks on the 16th of May, Timbergate Golf Course in Edinburgh. Be there for the fun and camaraderie.

We are offering 2 hours of CE at our general meeting on May 8th in case you are looking for some credits. Either way you'll get some great insights of how to coordinate VA benefits with Medicare.

Lastly our June meeting with incoming National President Susan Rider will be a great opportunity to hear her thoughts for her upcoming term and allow you to ask questions about our NABIP future. Please plan on attending!

See you soon,

Charlie

**Charlie Mayberry, NABIP/ South
Central Indiana Chapter President**

**CHAPTER LEADERSHIP
2024-2025**

President

Charlie Mayberry

President Elect

Johnny Reliford

Immediate Past President

Charlie Mayberry

Secretary

Jessica Croquart

Treasurer/Communications

Andrea Bogard

Legislative/ ISAHU-PAC

Larry Mayfield

Awards/Vanguard

Jessica Croquart

Membership

Libertie Villalpando

Media Relations

Laura D'Antoni

Professional Development

Libertie Villalpando

NABIP Pac

Ky Yarling

Retention

Greg Allen

Asst. Committee Mbrs.

Christy McGinley/Kaitlynn Loy



NABIP/South
Central Chapter
Website:
NABIPSCI.org



NABIP South
Central
Indiana Chapter



May 8 – Continuing Education

May 16 – Annual Golf Outing

**June 12 – *Susan Rider, NABIP
Incoming National President* (see
page 10)**

All financial records are available for review. Contact Andrea Bogard, Treasurer, at ABogardInsurance@yahoo.com. Copies of the By-Laws are available. Contact Jessica Croquart, Secretary, at Jessica.Croquart@SIHO.org

America's #1 Marketplace Health Insurance

Marketplace plans that fit your clients' needs with access to a provider network they can trust. **Enroll today!**

Want to learn more about Ambetter Health?
**Contact Alicia Morgan at (423) 491-9547
or alicia.morgan@centene.com.**



Scan the QR code to visit
[AmbetterHealth.com](https://www.AmbetterHealth.com)



Statistical claims and the #1 Marketplace Insurance statement are in reference to national on-exchange marketplace membership and based on national Ambetter data in conjunction with findings from Issuer Level Enrollment Data from CMS, State-Level Public Use File from CMS, Covered California Active Member Profile data, state insurance regulatory filings, and public financial filings.

Ambetter Health Insurance plans are underwritten by wholly owned subsidiaries of Centene, who is a Qualified Health Plan issuer in Indiana. Centene and its wholly owned subsidiaries comply with applicable Federal Civil Rights Laws and do not discriminate on the basis of race, color, national origin, age, disability, or sex. This is a solicitation for insurance ©2024 Centene Corporation. All rights reserved. Additional information is available in the Evidence of Coverage. Ambetter Health Insurance is offered by Ambetter from MHS in the state of Indiana.



Elevating healthcare for employees and employers

Anthem Blue Cross and Blue Shield is ready to connect your employees to the care, support, and resources they need

to thrive. Our connected ecosystem puts people and their needs at the center of everything we do.

We're here to support you with:

- A diverse network that delivers high-quality solutions across medical, pharmacy, dental, vision, and behavioral health benefits.
- Member-focused data and analytics to provide a personalized experience.
- Innovative tools and resources to help maximize health benefits and simplify administration.
- Next-generation pharmacy plans that integrate seamlessly with medical platforms to enable whole-health connection.
- A focus on equitable care that addresses the social drivers that impact health, such as transportation and food security.
- A variety of coverage options, including life, disability, and worksite plans, which cover critical illness and accident insurance.

Helping employees feel covered, protected, and confident in their care **Anthem** 

Anthem Blue Cross and Blue Shield is the trade name of Anthem Insurance Companies, Inc. Independent licensee of the Blue Cross and Blue Shield Association. Anthem is a registered trademark of Anthem Insurance Companies, Inc.

SOUTH CENTRAL INDIANA MAY MEMBER ANNIVERSARIES

KAITLYNN LOY — 2 YRS.

CHRISTY MCGINLEY — 2 YRS.

JENNIFER MOORE — 1 YR.



Visit Us Online



Let's Medicare Together™

**Boost Your Business
With a Leading
Medicare
Advantage Plan**

**20
YEARS**

Serving only the
Medicare population

94%

Member
retention rate

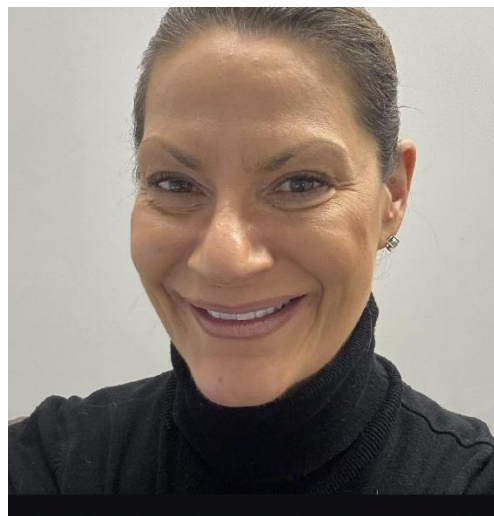


U.S.-based member
and broker support

For more info call: 1-952-843-3451

South Central *NEW* Member Profile ...

Delyce “DeeDee” Lottridge



Company Name: Zeller Insurance LLC

State of Birth: Michigan

Years in Insurance Business: 4 months

Favorite Movie: “Friday”

Favorite Food: Pizza

**Hobbies: Wildlife and Bird Watching and
Wine Tasting**



Interesting fact the average person does not know about you: I became friends with a cast member of a major Hollywood film and got to hang out with major celebrities occasionally during filming.

Favorite Quote or Saying: “Be yourself; everyone else is taken.”



Midwest Insurance Marketers of America

At Midwest Insurance Marketers of America, we strive to assist our Benefit Advisors in placing and maintaining their client customer base with the quality insurance carriers we represent.

Since 1988, our agency has assisted Benefit Advisors in placing over 25,000 insurance policies throughout our Midwest service area. Our primary market has been major medical coverage for employer groups or individual families.

In the last decade, we have expanded our service into a full circle approach for our Benefit Advisor and their client customers. Not only offering quality health insurance coverage, but complete insurance protection for the Senior arena,. We have established multiple levels of coverage through our full circle approach; **major medical, senior planning, and financial products.**

Phone: 317-328-0800



Simplifying Health Insurance for Your Peace of Mind
Group Benefits • Individual Health • Medicare
502.741.2814



 **edicare**
Summit Mini
Success through the disruption!

WEDNESDAY MAY 14

REMINDER: If you are a South Central member and attend the May 14th Medicare Summit Mini, your South Central chapter will reimburse \$25.00 of your \$100.00 registration fee **IF** you attend our special monthly meeting on June 12th when incoming NABIP President Susan Rider visits as guest speaker! Contact Treasurer Andrea (ABogardInsurance@yahoo.com) after May 14th to claim.

MAY
Charity
of Choice

THE KAYDE SUE FAULKENBURG
MEMORIAL FOUNDATION INC

The Kayde Sue Foundation INC is a nonprofit 501(c)3 that advocates for suicide and mental health awareness/prevention resources.

Suggested by South Central Member Linda Heckman

Zeller
INSURANCE
812.372.8456 • Columbus, IN

You got it?
We insure it!



Have Medicare questions?
I have answers.

Tom Leix
Licensed Sales Representative
7440 Woodland Dr. #100
Indianapolis, IN 46278
317-405-3919, TTY 711



MAY Collection Item:

Canned Fruit



Zach Shannon
Regional Sales Mgr.
Direct: 812-241-9028



**WE BELIEVE YOU CAN SELL MORE
WITH THE RIGHT SUPPORT.**



WE EXIST TO BE THE SUPPORT YOU NEED THROUGH OUR:

- SUPERIOR CUSTOMER SERVICE
- CONNECTIONS TO TRUSTED CARRIERS
- INNOVATIVE PROCESSES
- FREE TRAININGS ON PRODUCTS AND RESOURCES TO
- HELP YOU MARKET AND SELL
- BACK-OFFICE SUPPORT IN CLIENT AND CARRIER COMMUNICATION, MANAGING COMMISSIONS, RENEWALS, AND MORE

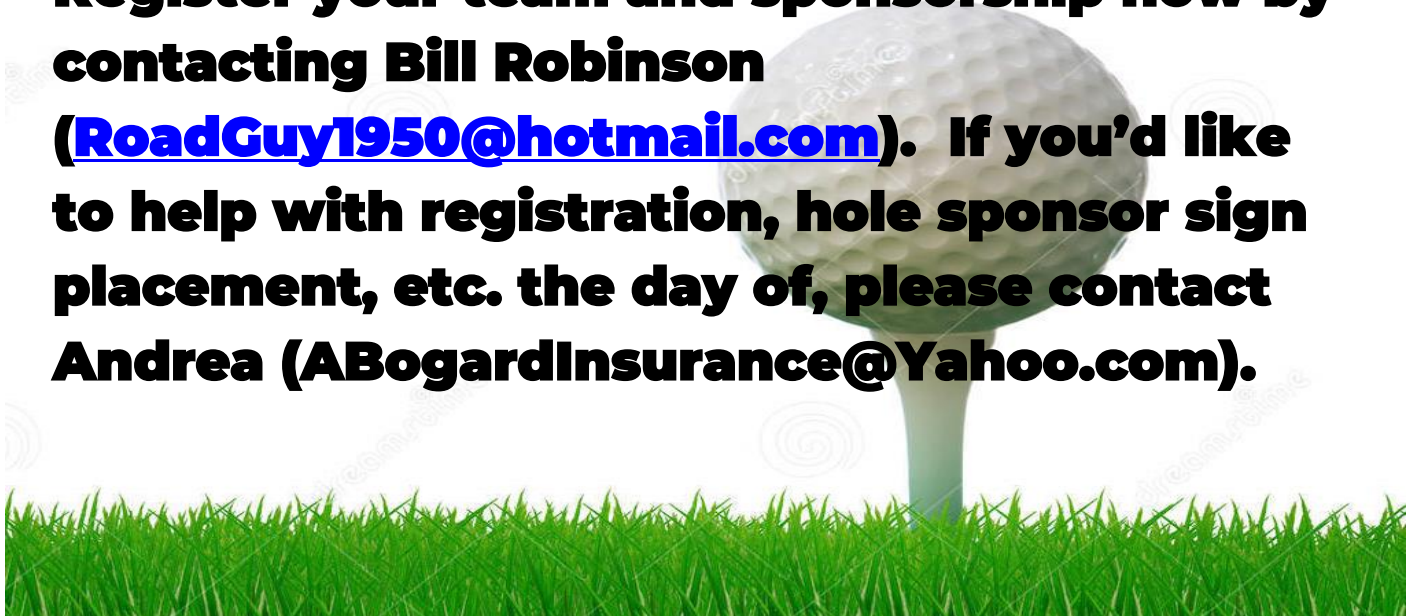
AGENT-LINK.NET | 1.800.960.1371



**Friday, May 16th is our
25th Annual Golf Outing
at Timbergate Golf Course
Edinburgh, Indiana.**



**Register your team and sponsorship now by
contacting Bill Robinson
(RoadGuy1950@hotmail.com). If you'd like
to help with registration, hole sponsor sign
placement, etc. the day of, please contact
Andrea (ABogardInsurance@Yahoo.com).**





Bob Herbst
Broker Manager
317-496-1841



*LET'S GO! Join us in Miami, FL, June 28 – July 1, 2025, for **NABIP's Annual Convention** for a future forward event that will **CONNECT, INNOVATE** and **LEAD** you to your best professional self.*

**MEDICARE
CANCER PLANS
LIFE INSURANCE
DENTAL & VISION
HEALTH INSURANCE
FINANCIAL PLANNING**

812 722 3699



HERITAGE
Insurance & Investments
PLANNING, SERVICE & MANAGEMENT





Be on the lookout for our Slate of Officers and Board Positions to be presented for your approval soon. If you'd like to serve in one of these roles for July 2025 thru June 2026, contact an existing board member now. You'll find our current leaders on page 2.

Guest Speaker June 12th . . .

Susan Rider. NABIP President-Elect



Susan serves as Director of Compliance and HR Consulting for Human Capital Concepts (a broker friendly PEO). Susan is regularly asked to speak to the media regarding employee benefits, wellness and human resource topics. She is an instructor for several NAHU certification courses and a national presenter, focusing on leadership, compliance and self-funding topics. For NABIP, she has served as professional development chair, media chair and young agent chair. She routinely submits data for NABIP comment letters. Regionally, she has served as professional development chair, retention chair, young agent chair and media chair. For the Indiana AHU, she has served as legislative chair, president and young agent chair, and on the Day on the Hill committee. For her local chapter, she has been president, president-elect, secretary and event chair, and served on the Sales Congress Committee. Projects she has worked on include the NABIP strategic plan (specifically the technology & member experience goals), ISAHU public/private partnership on collaboration for tobacco cessation change, NABIP's Mentoring Program, NABIP's Diversity, Equity & Inclusion Task Force, the NABIP Mental Health Task Force and the HIP 2.0 (Indiana Medicaid Expansion). Susan is adjunct faculty of organizational leadership at IUPUI, on the CE Advisory Council of the Indiana Department of Insurance, and board member Ben's Ranch a 501 (c) 3 which is creating new options and new hope for young people struggling with mental health challenges, by connecting them to employment opportunities on farms, ranches, stables, and therapeutic riding facilities.

VISION: My time on the Board has been truly inspiring, watching our board work collaboratively to drive association change. As a NABIP member, I believe that our leaders must model the way, inspire a shared vision, challenge the process, enable others to act and encourage the heart. Leadership means different things to different people. By leveraging the strengths, knowledge and leadership expertise, our diverse team of leaders from across the country must prepare our members for industry changes. The role of the broker/agent/consultant is critical to the future of employee benefits. The services that we provide and the products we sell will continue to evolve and our role to educate and advocate on behalf of our clients will not go away. My vision is for NABIP to be the association of choice for all employee benefit professionals. We are just scratching the surface with our capabilities and I am excited for our future. I believe in leading with consistency, integrity, fairness, humility and transparent communication.

I am dedicated to helping NABIP identify and develop future leaders to ensure members are prepared to take on leadership roles that become available—locally, statewide, regionally and nationally. I believe we need to encourage more collaborative efforts among councils/ committees within NABIP to bring the best results to our chapters. My curiosity drives me to ask questions, and learn more about our members and their needs. I am regularly encouraged to look at opportunities through a different lens and this makes me more effective as a leader. Our member experience is critical - to survive and thrive, we must identify, execute and lead strategic change